

SANAKOUse Case: **Listening Comprehension**Product: **SANAKO Lab 100**

The guide is based on the product version 6.0.1 running in demo mode

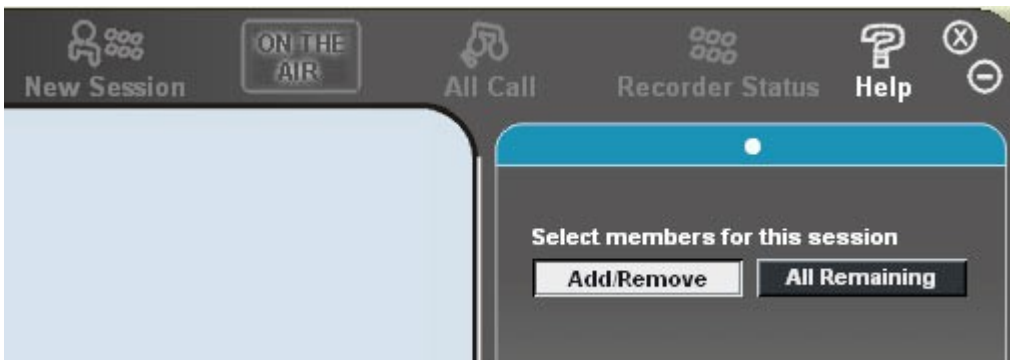
How to conduct a listening comprehension session

You are only four steps away from successfully managing a listening comprehension session for your class. This guide takes you step-by-step through the whole process using the SANAKO Lab 100. You'll discover how to set up the system for playing an audio CD, how to broadcast the audio to the class, and how to interact with your students.

Before starting the session, make sure you have an audio CD, answer sheets, student panels are ready, and the Lab 100 application on the teacher PC is running.

1. Select students

Push New Session button at the top bar of the Lab 100 application window. A new pane should open up to the right. Click All Remaining button to join the whole class to the session.



Open the list labeled Select Activity. Choose Listening Comprehension from the list.

2. Set up your media source

Insert an audio CD into the CD/DVD drive.

Open the list labeled Select audio source. Choose PC Audio CD.



A separate application, such as the Windows Media Player is automatically launched on your PC. Use the player program's playback keys to find the CD segment you intend to play. Hit Pause when you find the right track.

3. Start the listening comprehension session

Before you start a listening comprehension session, it is worthwhile to get the students' attention. In the Lab 100 application window, push Session Call button just below the audio source setting. After you have made your call, hit Session Call button again to end the audio transmission.



Push Start key in the playback pane of the Lab 100 window. The listening comprehension session will begin.

If the audio CD isn't playing yet, switch to the media player application. Make sure you have the right track and push Play.



4. End the session

When you have played the whole audio segment you intended, click End. If you want to finish your session, push Exit Session.

You may pause the audio broadcast when you want highlight a segment to the students. Switch to the media player application and pause playback. You may also pause your listening comprehension session by activating the Lab 100 window and pushing the Pause button.

Push Session Call to speak to the students. Push Session Call once more to cut off audio transmission from your own microphone. Hit Continue to proceed with the session. Return to the media player application and hit Play to continue playback from the CD.